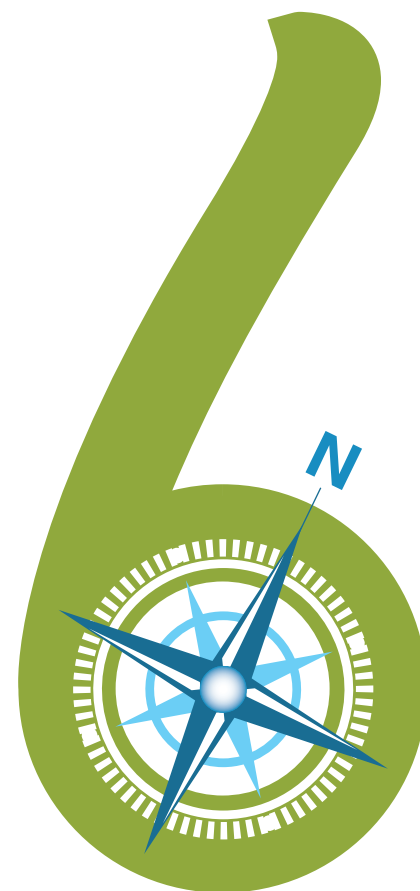


PUSAT KOMERSIL

Latitud

LINTAS

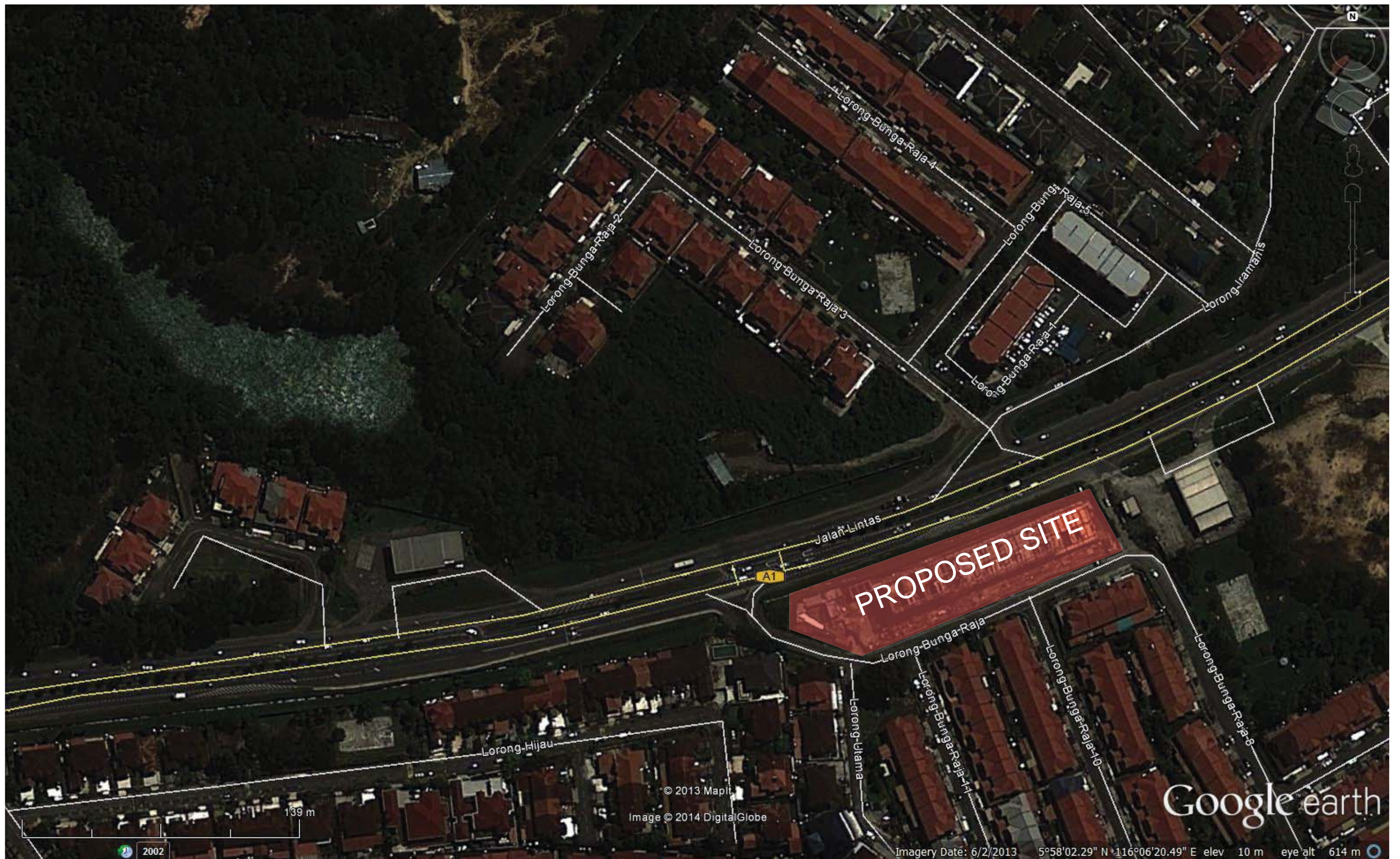




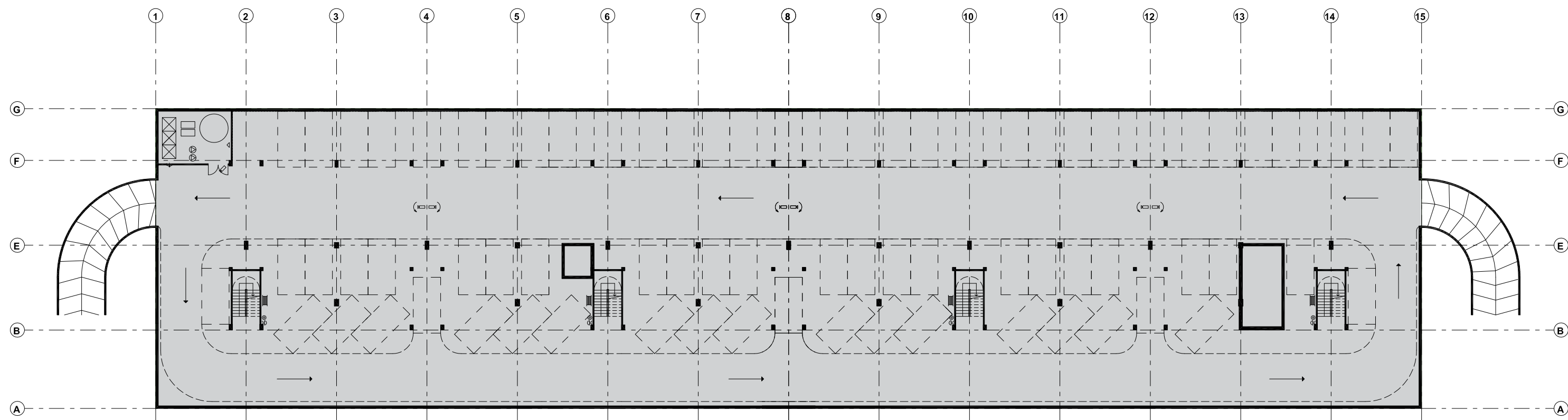
Location Plan



Proposed Site



Proposed Site

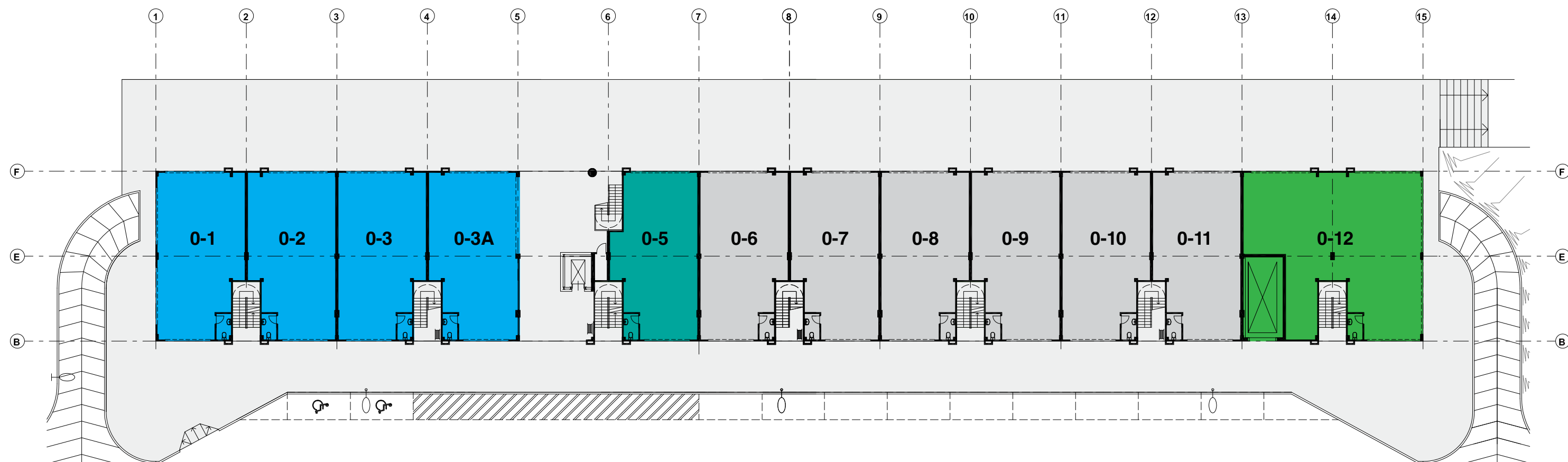


LOWER GROUND CARPARK FLOOR PLAN

Car Park Management



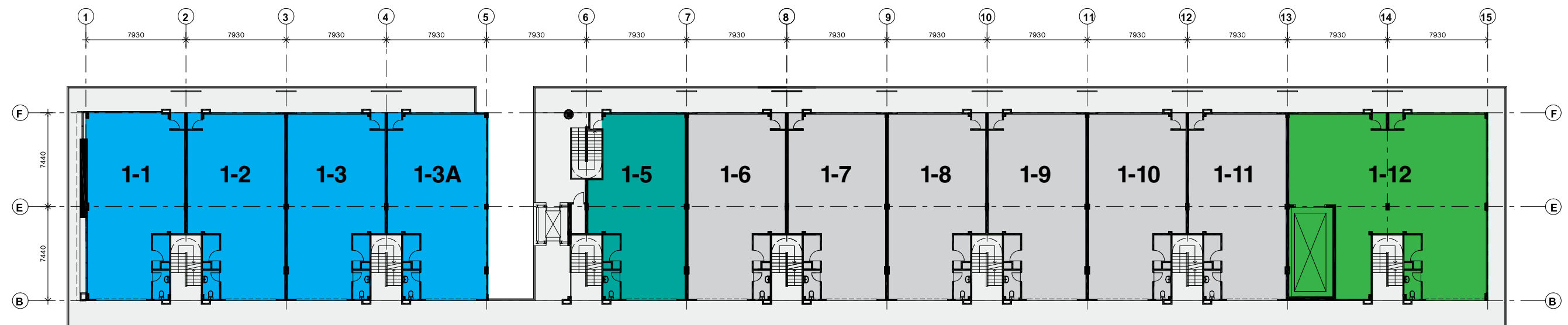
DISCLAIMER : The information contained in this material is subject to change and cannot form part of an offer or contract. All renderings are artist's impressions only. While every reasonable care has been taken in preparing this advertisement, the developer cannot be held responsible for any inaccuracy. All above items are subject to variations, modifications and substitutions as may be required by the Authorities or recommended by the Architect or Engineer.



GROUND FLOOR PLAN

LOT NUMBER	NFA (m ²)	LOT NUMBER	NFA (m ²)	LOT NUMBER	NFA (m ²)
0-1	111.75	0-5	105.51	0-9	111.75
0-2	111.75	0-6	111.75	0-10	111.75
0-3	111.75	0-7	111.75	0-11	111.75
0-3A	111.75	0-8	111.75	0-12	223.51

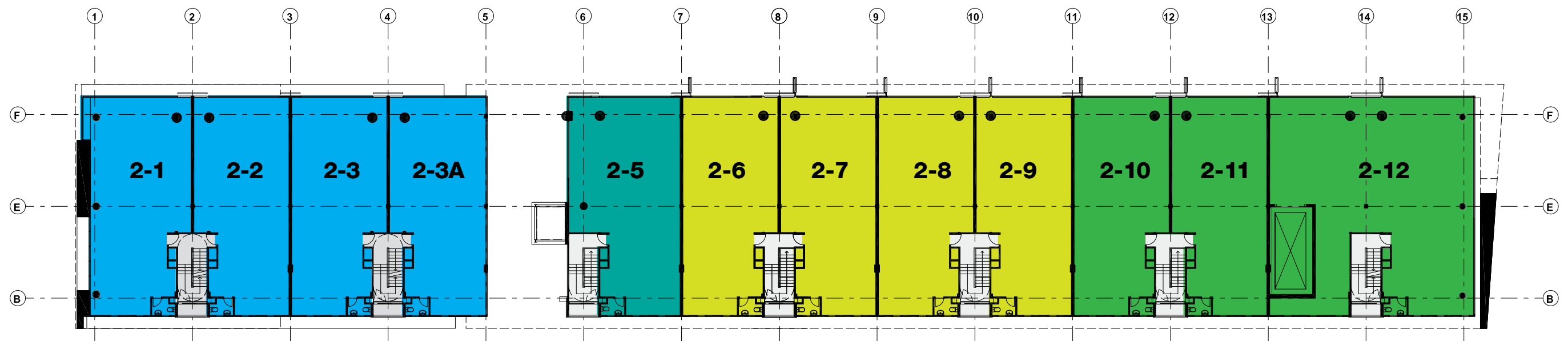
DISCLAIMER : The information contained in this material is subject to change and cannot form part of an offer or contract. All renderings are artist's impressions only. While every reasonable care has been taken in preparing this advertisement, the developer cannot be held responsible for any inaccuracy. All above items are subject to variations, modifications and substitutions as may be required by the Authorities or recommended by the Architect or Engineer.



FIRST FLOOR PLAN

LOT NUMBER	NFA (m ²)	LOT NUMBER	NFA (m ²)	LOT NUMBER	NFA (m ²)
1-1	111.55	1-5	106.76	1-9	111.55
1-2	111.55	1-6	111.55	1-10	111.55
1-3	111.55	1-7	111.55	1-11	111.55
1-3A	111.55	1-8	111.55	1-12	223.31

DISCLAIMER : The information contained in this material is subject to change and cannot form part of an offer or contract. All renderings are artist's impressions only. While every reasonable care has been taken in preparing this advertisement, the developer cannot be held responsible for any inaccuracy. All above items are subject to variations, modifications and substitutions as may be required by the Authorities or recommended by the Architect or Engineer.



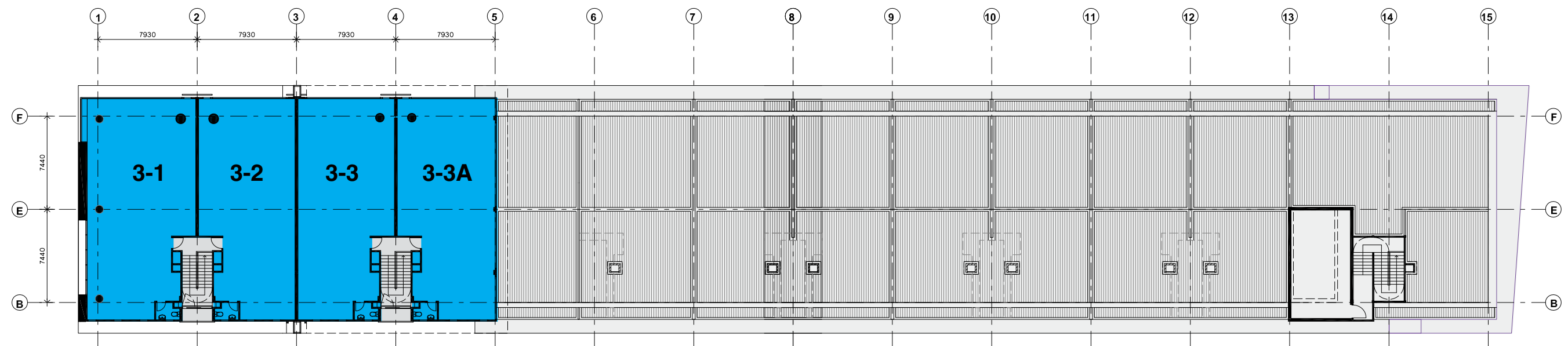
SECOND FLOOR PLAN

LOT NUMBER	NFA (m ²)
2-1	141.12
2-2	132.72
2-3	132.72
2-3A	132.72

LOT NUMBER	NFA (m ²)
2-5	145.90
2-6	132.72
2-7	132.72
2-8	132.72

LOT NUMBER	NFA (m ²)
2-9	132.72
2-10	132.72
2-11	132.72
2-12	282.32

DISCLAIMER : The information contained in this material is subject to change and cannot form part of an offer or contract. All renderings are artist's impressions only. While every reasonable care has been taken in preparing this advertisement, the developer cannot be held responsible for any inaccuracy. All above items are subject to variations, modifications and substitutions as may be required by the Authorities or recommended by the Architect or Engineer.



THIRD FLOOR & LOWER ROOF PLAN

LOT NUMBER	NFA (m ²)
3-1	149.83
3-2	132.72
3-3	132.72
3-3A	132.72

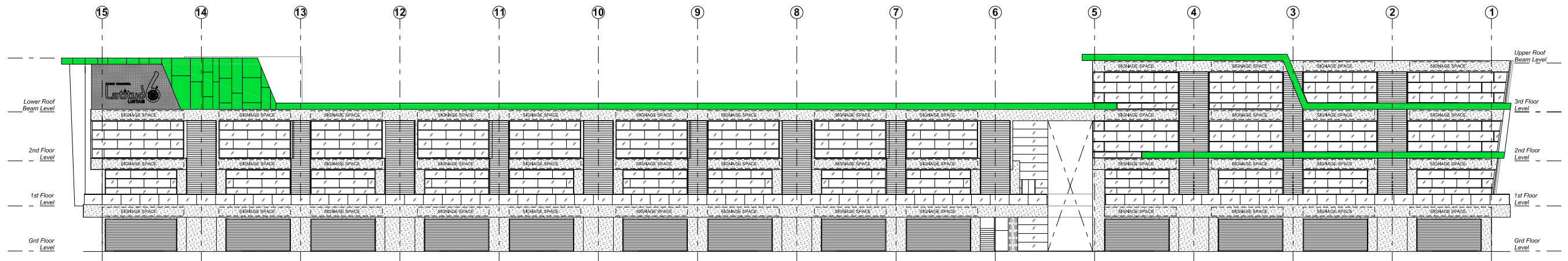
DISCLAIMER : The information contained in this material is subject to change and cannot form part of an offer or contract. All renderings are artist's impressions only. While every reasonable care has been taken in preparing this advertisement, the developer cannot be held responsible for any inaccuracy. All above items are subject to variations, modifications and substitutions as may be required by the Authorities or recommended by the Architect or Engineer.

3-1	3-2	3-3	3-3A
2-1	2-2	2-3	2-3A
1-1	1-2	1-3	1-3A
0-1	0-2	0-3	0-3A

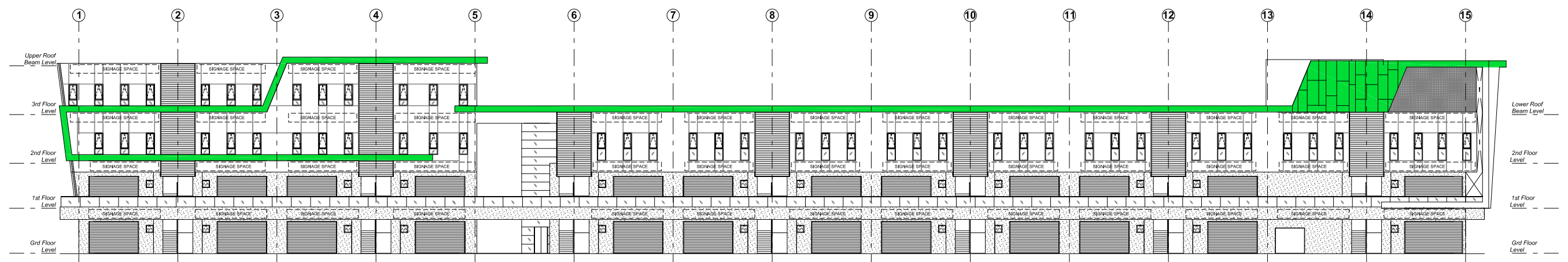
2-5	2-6	2-7	2-8	2-9	2-10	2-11	2-12
1-5	1-6	1-7	1-8	1-9	1-10	1-11	1-12
0-5	0-6	0-7	0-8	0-9	0-10	0-11	0-12

SECTION- DIAGRAM

DISCLAIMER : The information contained in this material is subject to change and cannot form part of an offer or contract. All renderings are artist's impressions only. While every reasonable care has been taken in preparing this advertisement, the developer cannot be held responsible for any inaccuracy. All above items are subject to variations, modifications and substitutions as may be required by the Authorities or recommended by the Architect or Engineer.

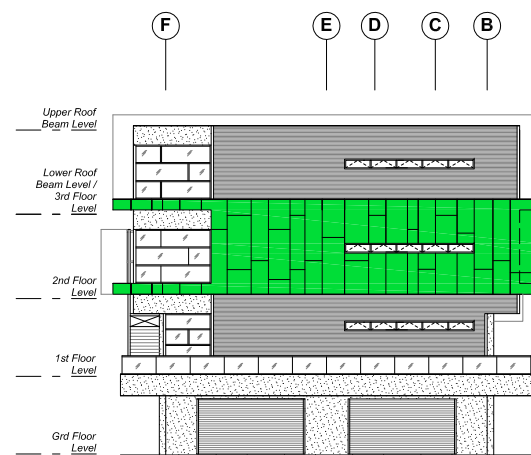


FRONT ELEVATION

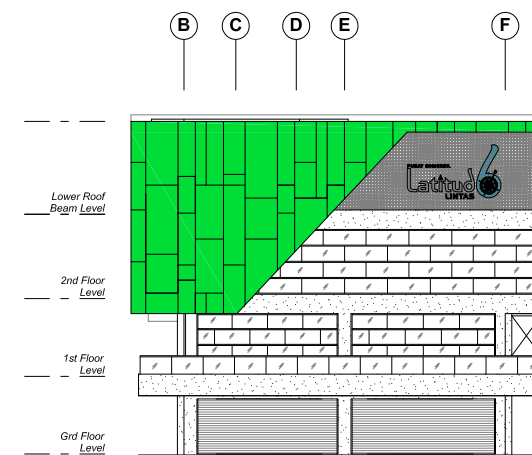


REAR ELEVATION

DISCLAIMER : The information contained in this material is subject to change and cannot form part of an offer or contract. All renderings are artist's impressions only. While every reasonable care has been taken in preparing this advertisement, the developer cannot be held responsible for any inaccuracy. All above items are subject to variations, modifications and substitutions as may be required by the Authorities or recommended by the Architect or Engineer.



LEFT SIDE ELEVATION



RIGHT SIDE ELEVATION

DISCLAIMER : The information contained in this material is subject to change and cannot form part of an offer or contract. All renderings are artist's impressions only. While every reasonable care has been taken in preparing this advertisement, the developer cannot be held responsible for any inaccuracy. All above items are subject to variations, modifications and substitutions as may be required by the Authorities or recommended by the Architect or Engineer.



DISCLAIMER : The information contained in this material is subject to change and cannot form part of an offer or contract. All renderings are artist's impressions only. While every reasonable care has been taken in preparing this advertisement, the developer cannot be held responsible for any inaccuracy. All above items are subject to variations, modifications and substitutions as may be required by the Authorities or recommended by the Architect or Engineer.